

INON Optics Supports SONY DSC-RX0/MPK-HSR1

INON INC. is pleased to announce official release of two attachment lenses on 『February 3rd, 2018』 .

- 「UWL-100 28M55」Wide Conversion Lens (*2)(*3)(*4)
--Release date: February 3rd, 2018
--JAN code: 456212143 867 5
- 「UCL-G165 M55」 Underwater Wide Close-up Lens (*5)(*6)
--Release date: February 3rd, 2018
--JAN code: 456212143 775 3



「UWL-100 28M55」



「UCL-G165 M55」



From left: Without lens, with 「UWL-100 28M55」 , with 「UCL-G165 M55」

(*1) Contact Sony Marketing Inc. for detail of camera/underwater housing. INON Inc. confirms product compatibility based on a camera available in Japan.

(*2) Vignetting is observed on land but underwater will not have vignetting.

(*3) The 「Dome Lens Unit II for UWL-100」 is NOT compatible due to vignetting.

(*4) This lens is the M55 screw mount version of current 「UWL-100 28AD」 instead of original bayonet mount. Please contact your local dealer if you wish to replace original bayonet mount of the 「UWL-100 28AD」 with this M55 screw mount.

(*5) Designed for underwater use only. Vignetting is observed on land but underwater will not have vignetting.

(*6) This lens is the M55 screw mount version of current 「UCL-G165 SD」 instead of original bayonet mount. Please contact your local dealer if you wish to replace original bayonet mount of the 「UCL-G165 SD」 with this M55 screw mount.

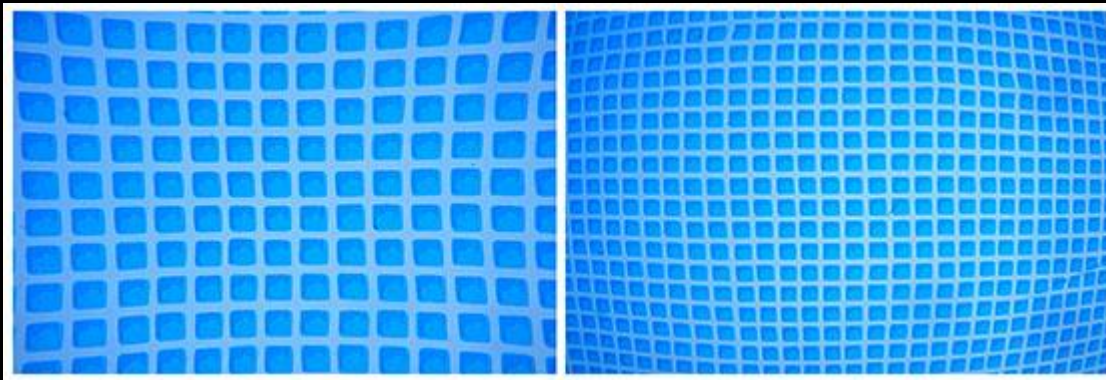
■ 「UWL-100 28M55」 Wide Conversion Lens Product Features ■

● Attached Directly on the Genuine Underwater Housing MPK-HSR1

· The lens mount is same M55 screw mount as filter screw of the MPK-HSR1 enabling you to attach the lens directly on the housing without any adapter.

● Compact yet Wide 100 degree Coverage

· The compact lens body matches with compact MPK-HSR1 without burden to provide handy wide imaging. The lens increases coverage dramatically to maximum 100 degree coverage underwater.



Left : Without attachment lens

Right : With the 「UWL-100 28M55」 Wide Conversion Lens

● Dramatically Shorten Minimum Focusing Distance

Minimum focusing distance of the DSC-RX0 on land is 「50cm/1.6ft」 which will be extended at x1.3 underwater due to reflection ratio underwater. By attaching this lens, minimum focusing distance underwater will be shorten to 「118mm/4.6in」 (*7) to enable you to take a Close Focus Wide Angle (CFWA) image.

● 「Lens Hood II for UWL-100 28AD」 is compatible

Optional 「Lens Hood II for UWL-100 28AD」 is usable to block unnecessary light coming from outside of lens coverage to suppress flare/ghost.

■ 「UCL-G165 M55」 Underwater Wide Close-up Lens Product Features ■

● Attached Directly on the Genuine Underwater Housing MPK-HSR1

As same as the wide lens, the lens mount is same M55 screw mount as filter screw of the MPK-HSR1 enabling you to attach the lens directly on the housing without any adapter.

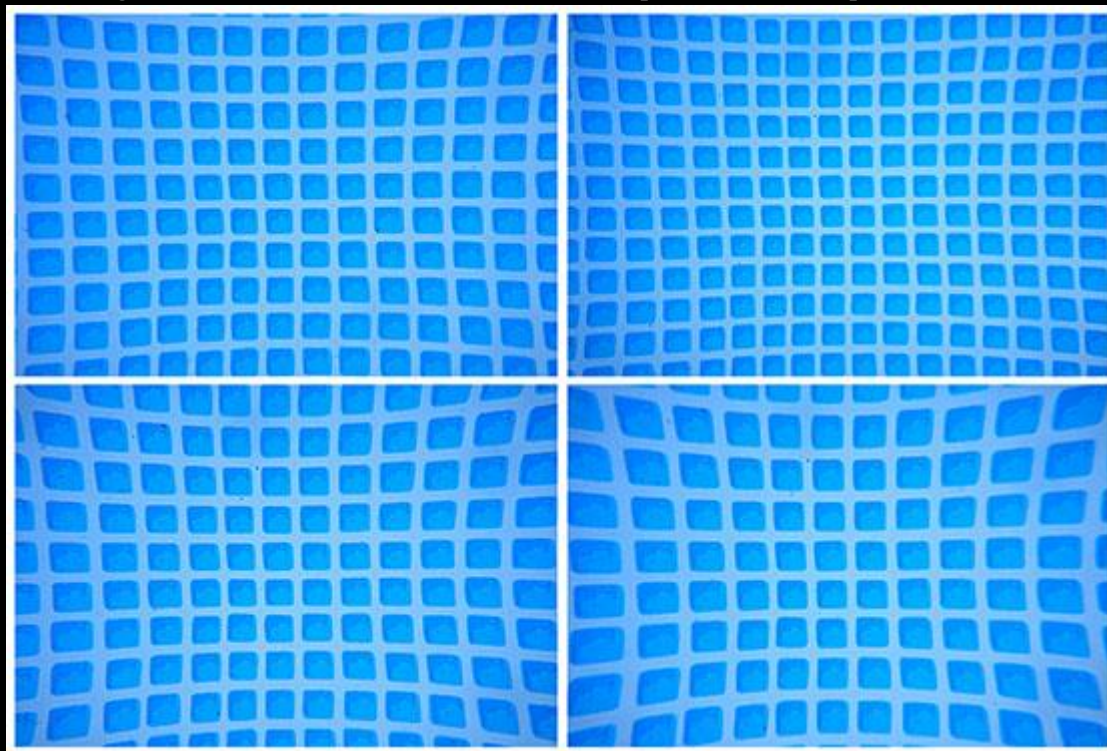
● Wide Close-up Lens with Deep Depth of Field

The optics design widens the coverage slightly to have benefit of deep depth of field making minimum focusing distance underwater 「96mm/3.8inch」 (*7) enabling to shoot a subject at closer distance.

● Why UCL-G165 M55?

The DSC-RX0 carries wide 24mm fix lens (*8) and its superior optical characteristic to have less aberrations creates pincushion aberration (concave center part) underwater. This aberration gets more significant with standard close-up lens and powerful lens has more degradation on image corners. The UCL-G165 M55 is so-called wide close-up lens, so the lens can suppresses the aberration and enables more close-up image comparing standard close-up lens. Comparison images as below.

*All images are taken from same distance to compare distortion (pincushion aberration).



Upper left : Without lens. Minimum focusing distance underwater is approx. 65cm/2.1ft.

Upper right : With 「UCL-G165 M55」 Minimum focusing distance underwater is approx. 96mm/3.8in.

Lower left : With 「UCL-330」 via step-up ring. Minimum focusing distance underwater is approx. 202mm/8.0in.

Lower right : With 「UCL-165 M67」 via step-up ring. Minimum focusing distance underwater is approx. 135mm/5.3in.

(*7) Measured distance between a subject and lens edge when autofocus works underwater (in a tank).

(*8) Focal length based on 35mm film equivalent.

■ Feature ■

『UWL-100 28M55』 Wide Conversion Lens (*2) (*3) (*4)

Outer diameter/length:	φ 87.4mm(3.4in)/43.4mm(1.7in)
Weight:	[Air] 386g(13.6oz)/[Underwater] 222g(7.8oz)
Mount system:	INON M55 Mount
Depth rating:	60m (197ft)
Material/surface finishing:	Corrosion-resistant aluminum alloy/rigid black alumite
Lens material/coating:	Optical glass/anti-reflection coating
Construction:	4 groups 4 elements
Maximum incident angle(*9):	100.0 degree (underwater)

『UCL-G165 M55』 Underwater Wide Close-up Lens (*5)(*6)

Outer diameter/length:	φ 77mm(3.0in)/25.5mm(1.0in)
Weight:	[Air]217g(7.7oz) / [Underwater]135g(4.8oz)
Mount system:	INON M55 Mount
Depth rating:	60m(197ft)
Material/surface finishing:	Corrosion-resistant aluminum alloy/rigid black alumite
Lens material/coating:	Optical glass/anti-reflection coating
Construction:	2 groups 2 elements
Focal length(*10):	165mm(3.5in) *Underwater use only.

(*9) Actual lens coverage varies depending on camera's shooting mode.

(*10) Focal length of the lens itself. Not combined focal length with camera's master lens.

■ Set-up example ■



- Sony 「DSC-RX0」 /genuine underwater housing 「MPK-HSR1」
- 「UWL-100 28M55」 + 「Lens Hood II for UWL-100 28AD」
- 「LF3100-EW」
- 「Single Light Holder LF」
- 「Shoe Base」



- Sony 「DSC-RX0」 /genuine underwater housing 「MPK-HSR1」
- 「UCL-G165 M55」
- 「LF3100-EW」
- 「Grip Base M1」
- 「Single Light Holder LF」
- 「Direct Arm YS-MV Set」

*The 「Grip Base D4」 is NOT compatible due to housing depth.



- Sony 「DSC-RX0」 /genuine underwater housing 「MPK-HSR1」
- 「UWL-100 28M55」 + 「Lens Hood II for UWL-100 28AD」
- 「LF3100-EW」 x2
- 「Grip Base M1」 + 「D Holder」
- 「Single Light Holder LF」 x2
- 「Direct Arm YS-MV Set」 x2
- 「Z Adapter MV 1/4-20UNC」
- 「Clamp III」
- 「M67 Lens Arm」
- 「UCL-165M67」 *Use as an LCD magnifier

*Above set-up needs to remove pre-installed 「Shoe Adapter」 by an Allen key (supplied with the housing) to replace with 「Z Adapter MV 1/4-20UNC」 .

■ Comparison images among different lenses at minimum focusing distance ■

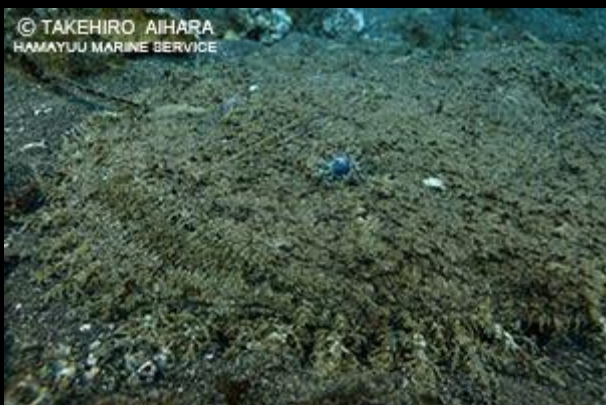


Left : Without lens. Shot at camera's minimum focusing distance (approx. 65cm/2.1ft).
 Center : With 「UWL-100 28M55」. Shot at minimum focusing distance of the lens (approx. 12cm/4.7in).
 Right : With 「UCL-G165 M55」. Shot at minimum focusing distance of the lens (approx. 10cm/3.9in).

■ Sample images ■



--Subject : Yellow goosefish
 --Equipment : Sony DSC-RX0/MPK-HSR1, UWL-100 28M55, LF3100-EW x 2
 --Photo data : Manual exposure mode (F4, 1/40, ISO100), photo taken at minimum focusing distance (approx. 12cm/4.7in)
 --Photo by : T. Aihara (HAMAYUU Marine Service) at "Wannai", Osezaki, Shizuoka, Japan



--Subject : Yellow goosefish
 --Equipment : Sony DSC-RX0/MPK-HSR1, UCL-G165 M55, LF3100-EW x 2
 --Photo data : Manual exposure mode (F4, 1/50, ISO100), photo taken at minimum focusing distance (approx. 10cm/3.9in)
 --Photo by : T. Aihara (HAMAYUU Marine Service) at "Wannai", Osezaki, Shizuoka, Japan



--Subject : Longnose hawkfish
--Equipment : Sony DSC-RX0/MPK-HSR1, UCL-G165 M55, LF3100-EW x 2
--Photo data : Manual exposure mode (F4, 1/100, ISO400), photo taken at minimum focusing distance (approx. 10cm/3.9in.)
--Photo by : T. Aihara (HAMAYUU Marine Service) at “Wannai”, Osezaki, Shizuoka, Japan

*Sample images courtesy of HAMAYUU Marine Service <http://hamayuu.net/>

■ Relative Information ■

- LED flashlight
http://www.inon.jp/products/le_light/lineup.html
- Arm system
<http://www.inon.jp/products/armssystem/lineup.html>

January 30th, 2018
INON INC.

*Press release information is as of January 30th, 2018 and subject to change without prior notice.

INON

The home of ultimate underwater imaging gear

www.inon.jp